

# 6RZ65



MADE IN ITALY

PLACING BOOM:  
**OPENING SYSTEM "RZ"**

PUMPING UNIT:  
**UP TO 210 m<sup>3</sup>/h**

TOTAL WEIGHT:  
**< 53 t (116845 lb) on vehicle 6 axles**

ASSEMBLY ON VEHICLE 6 AXLES:  
**WB 6,750 mm  
(22'1")**

## TECHNICAL CHARACTERISTICS

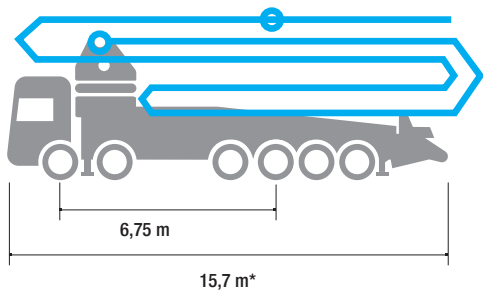
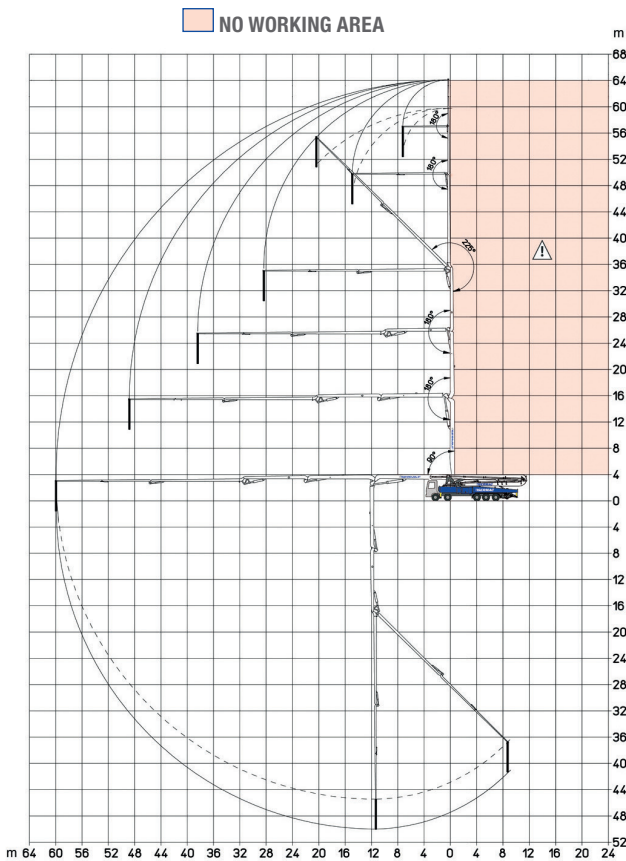


- Concrete pump designed and made by SERMAC
- Structural analyses with Finite Element Method (FEM)
- Pump frame designed for high torsion rigidity
- Excellent assembly on a 6-axis chassis
- Boom 6-stage, RZ-folding type
- Pipeline Ø 125 mm (5")
- Main components sourced from genuine European manufacturers
- Pumping unit with open hydraulic system
- Concrete S-valve Ø 9"
- Total length < 15,5 meters (50'10")

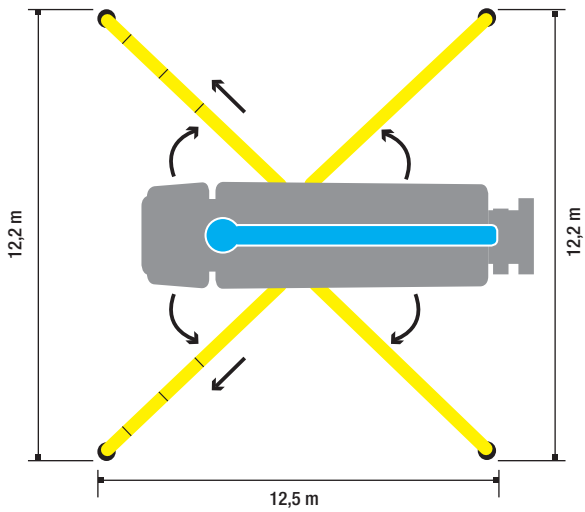




# 6RZ65



\*Dimensions varying according to truck assembly



GRUPPO POMPANTE G9	
	AG9X10-210-85
THEORICAL OUTPUT (MAX)* PISTON SIDE	210 m <sup>3</sup> /h - 274 yd <sup>3</sup> /h
PRESSURE ON CONCRETE (MAX)* PISTON SIDE	85 bar - 1232 psi
NUMBERS OF CYCLES PER MINUTES	30 ' /min
PISTONS DIAMETER	250 mm
CONCRETE CYLINDERS	2400 mm
S-VALVE DIMENSION	9"
CONCRETE HOPPER CAPACITY	650 l

\*Cannot be reached simultaneously



## DISTRIBUTION BOOMS

MAX. VERTICAL REACH	64,35 m (211'11")
MAX. HORIZONTAL REACH	60,35 m (197'11")
MAX. DOWNWARD REACH	-50 m (-164')
SECTION NUMBER	6
PIPELINE	125 mm (5")
ROTATING ANGLE	370°
SECTION OPENING ANGLES	90° - 180° - 180° 225° - 210° - 90°
OPENING SYSTEM	RZ
FRONT OUTRIGGERS	X-type orientable
REAR OUTRIGGERS	Swing-out
FRONT OPENING	12,2 m (40')
REAR OPENING	12,2 m (40')
RUBBER END HOSE LENGHT	3 m

## STANDARD EQUIPMENT

- Driven by PTO or gear box
- Concrete pipeline made in twin-wall with chromium carbide inserts
- Boom control by proportional distributor "Load Sensing"
- Two sets of radio remote controls provided with 2-speed proportional boom control
- High strength wear parts (S valve, wear plate, compensation ring)
- Automatic hopper greasing unit and manual back-up system
- Safety device on hopper door and hopper grate
- Remote controlled electric vibrator on hopper grate
- Aluminium hopper cover
- Water pump (60 l/min, 30 bar)
- Water tank capacity 500 l
- Lights for hopper lighting, LED
- Working lights, LED
- Metal bin for accessories beside hopper
- Warning horn
- Rear camera
- Accessories for cleaning and maintenance
- Declaration of conformity (user and maintenance manual)

## ELECTRONIC STABILITY CONTROL SYSTEM

- Sermac Control Stability (SCS - Basic)



## ACCESSORIES ON REQUEST

- Air charged sprayer for concrete release agent (25 l, 8 bar)
- Air compressor for pipeline cleaning (850 l/min)
- Automatic boom greasing system
- Automatic release of end hose
- Closing boom safety sensor
- Pipes and rubber end hose holder
- Pressure washer with fan-shaped nozzle (17 l/min, 130 bar)
- Proportional radio control with display
- Stop-flow concrete valve

## ELECTRONIC STABILITY CONTROL SYSTEM

- Sermac Control Stability (SCS - Advanced)





More information:  
[sermacpumps.com](http://sermacpumps.com)

Reserved rights SERMAC S.r.l. - this brochure shows models, equipment (standard and optional), data and technical characteristics subject to modification for machines produced and sold by Sermac S.r.l. The catalog is intended for information purposes and the data shown does not constitute any sales contract. (6RZ65 - 07/24).



## SERMAC Srl

Headquarter: Via A. Manzoni, 146 - 20811 Cesano Maderno, (MB) Italy  
Tel. +39 0362 364 320 - Fax +39 0362 163 2000  
[info@sermacpumps.com](mailto:info@sermacpumps.com)

